

## Artifacts Practice 1 2017

### Multiple Choice

Identify the choice that best completes the statement or answers the question.

\_\_\_ 1.

*Figure 7*



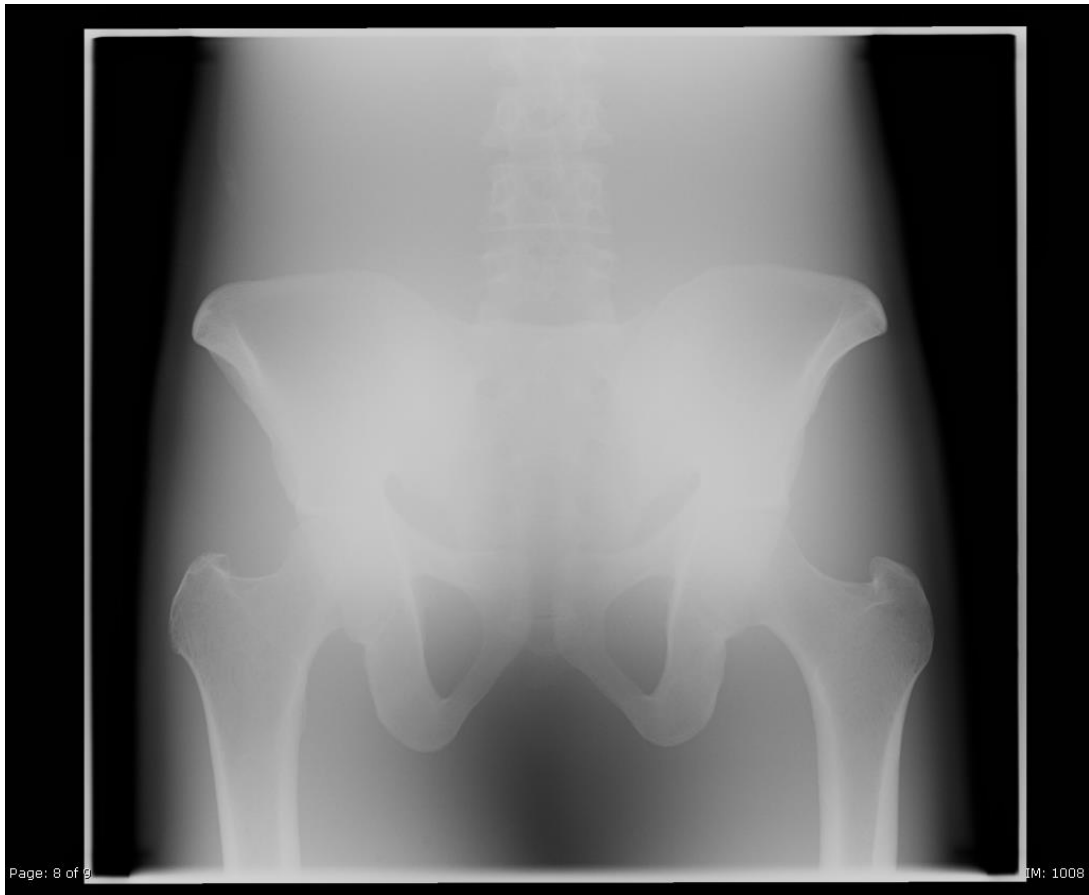
*Pertaining to the figure 7, answer the following question.*

The radiographic artifact seen in the figure 7 radiograph was caused by:

- a. Monitoring cables
- b. High voltage cables
- c. scatter radiation
- d. Double exposure

\_\_\_ 2.

*Figure 4*



*Pertaining to the figure 4, answer the following question.*

What was the most likely cause that necessitated a repeat of this radiograph?

- a. IR placed upside down
- b. excessive scatter radiation
- c. An excessive timer setting resulting in the motion of the abdominal structures
- d. double exposure
- e. grid error

\_\_\_\_\_ 3.

*Figure 2*



***Pertaining to the figure 2, answer the following question.***

What was the most likely cause that necessitated a repeat of this knee radiograph?

- a. IR placed upside down
- b. excessive scatter radiation
- c. Light leak
- d. CR reader error

\_\_\_\_\_ 4.

***Figure 7***



*Pertaining to the figure 7, answer the following question.*

What was the most likely cause that necessitated a repeat of this radiograph?

- a. grid error
- b. excessive scatter radiation
- c. An excessive timer setting
- d. double exposure
- e. clothing

\_\_\_\_ 5.

*Figure 8*



*Pertaining to the figure 8, answer the following question.*

What was the most likely cause that necessitated a repeat of this radiograph?

- a. cables
- b. excessive scatter radiation
- c. IP scratches
- d. double exposure
- e. clothes ribbing

\_\_\_\_\_ 6.

*Figure 9*



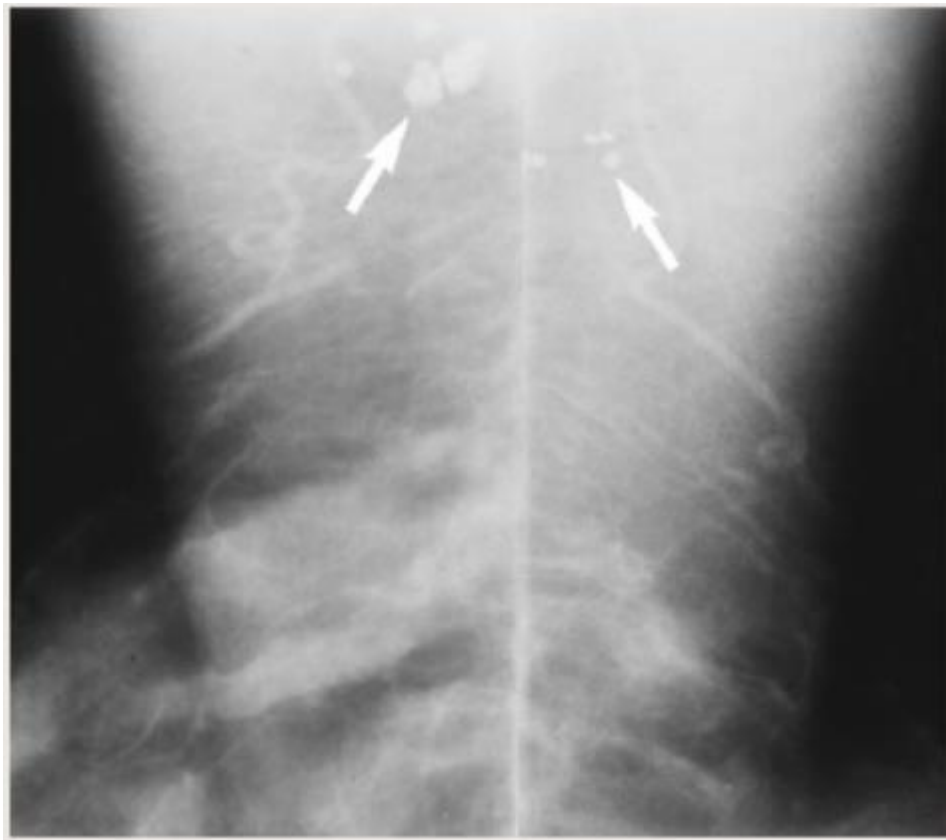
*Pertaining to the figure 9, answer the following question.*

What was the most likely cause that necessitated a repeat of this radiograph?

- a. filtration error
- b. excessive scatter radiation
- c. sandbag
- d. double exposure
- e. grid error

7.

**Figure 21**  
**Shoulder (armpit)**



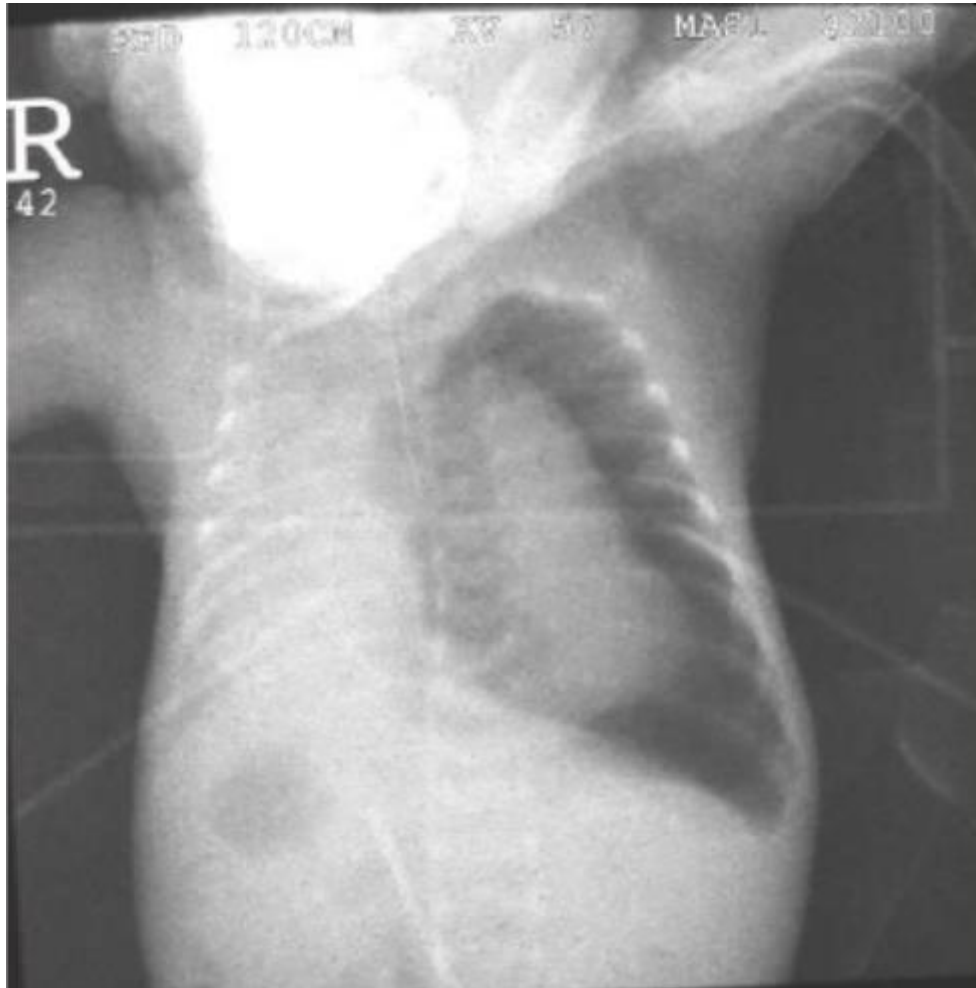
***Pertaining to the figure 21, answer the following question.***

What was the most likely cause that necessitated a repeat of this radiograph?

- a. contrast leak
- b. deodorant
- c. An excessive timer setting
- d. double exposure
- e. grid error

8.

*Figure 22*



*Pertaining to the figure 22, answer the following question.*

What was the most likely cause that necessitated a repeat of this radiograph?

- a. low kVp
- b. excessive scatter radiation (backscatter)
- c. An excessive timer setting
- d. double exposure
- e. grid error



**Short Answer**

9.

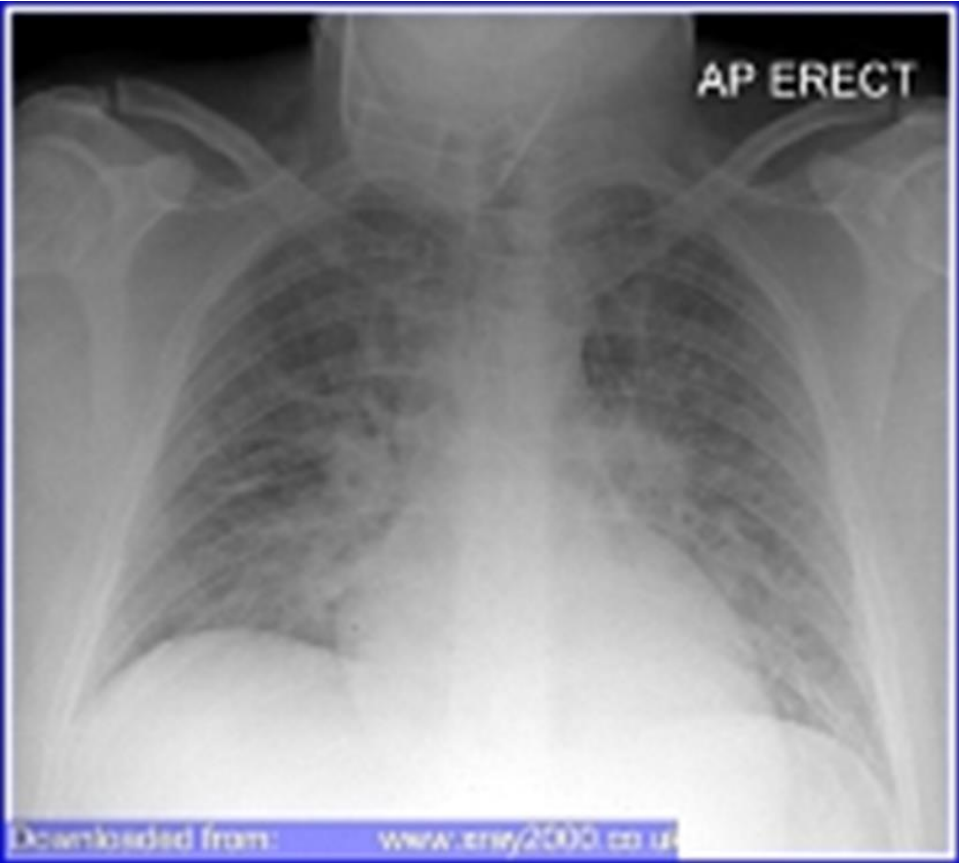
Figure 11  
Artifact



The artifact illustrated in Figure 11 was caused by:

10.

Figure 12  
Artifact



The artifact illustrated in Figure 12 was caused by:

11.

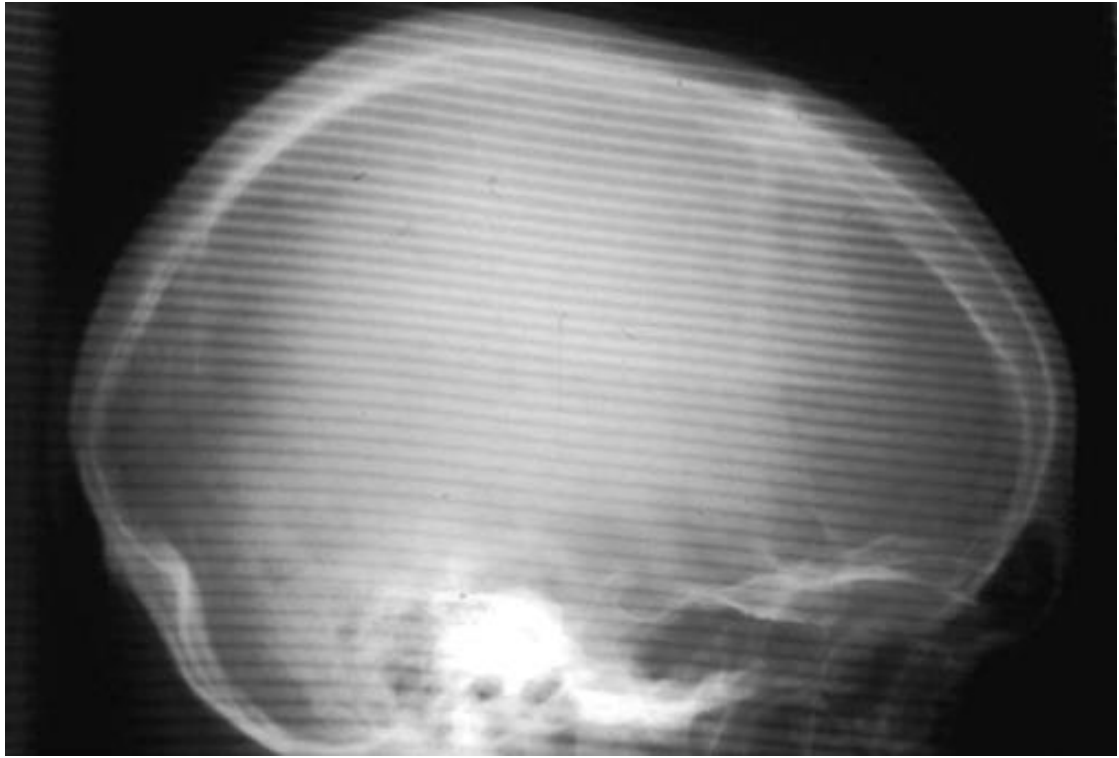
Figure 13  
Artifact



The artifact illustrated in Figure 13 was caused by:

12.

Figure 14  
Artifact



The artifact illustrated in Figure 14 was caused by:

13.

Figure 15  
Artifact



The artifacts illustrated in Figure 15 was caused by:

14.

Figure 16  
Artifact



The artifact illustrated in Figure 16 was caused by:

15.

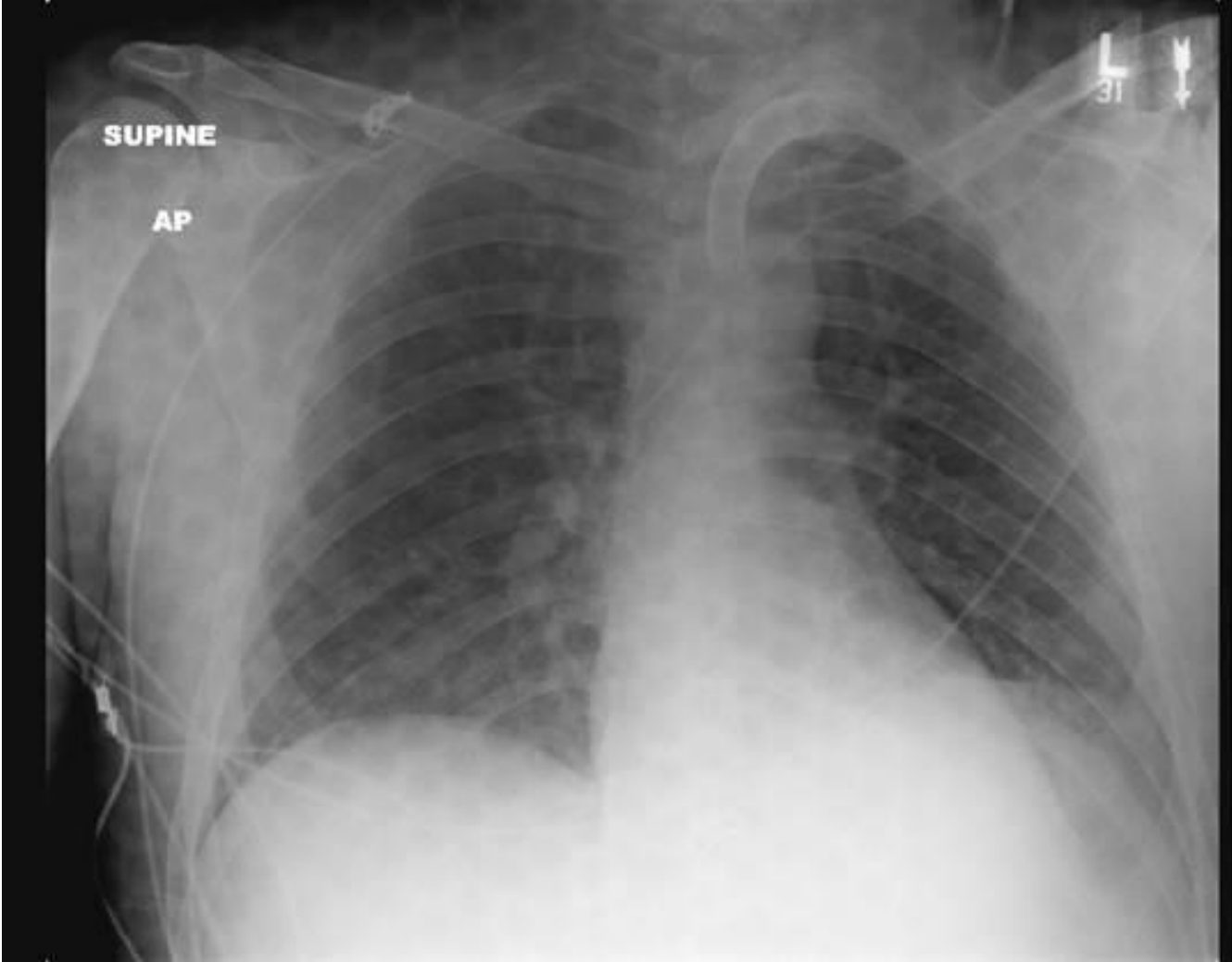
Figure 17  
Artifact



The artifact illustrated in Figure 17 was caused by:

16.

Figure 18  
Artifact



The artifact illustrated in Figure 18 was caused by:



17.

Figure 31  
Artifact



The artifact illustrated in Figure 31 was caused by:

**Artifacts Practice 1 2017**  
**Answer Section**

**MULTIPLE CHOICE**

- |           |        |
|-----------|--------|
| 1. ANS: D | PTS: 1 |
| 2. ANS: B | PTS: 1 |
| 3. ANS: D | PTS: 1 |
| 4. ANS: E | PTS: 1 |
| 5. ANS: E | PTS: 1 |
| 6. ANS: A | PTS: 1 |
| 7. ANS: B | PTS: 1 |
| 8. ANS: B | PTS: 1 |

**SHORT ANSWER**

9. ANS:  
Plastic buttons
- PTS: 1
10. ANS:  
Plastic oxygen mask
- PTS: 1
11. ANS:  
IR upside-down
- PTS: 1
12. ANS:  
Grid error (low frequency grid caused Moire artifact)
- PTS: 1
13. ANS:  
CR reader error
- PTS: 1
14. ANS:  
backscatter
- PTS: 1
15. ANS:  
Clothing
- PTS: 1
16. ANS:  
Bair hugger

PTS: 1

17. ANS:  
Back brace

PTS: 1