

Artifacts Practice 2017

Multiple Choice

Identify the choice that best completes the statement or answers the question.

___ 1.

Figure 7



Pertaining to the figure 7, answer the following question.

The high brightness semicircular radiographic artifacts seen in this lateral cervical radiograph were caused by:

- a. Mattress springs
- b. High voltage cables
- c. Cassette strips
- d. grid lead strips

___ 2.

Figure 4



Pertaining to the figure 4, answer the following question.

What was the most likely cause that necessitated a repeat of this thoraco-lumbar radiograph?

- a. IR placed upside down
- b. excessive scatter radiation
- c. An excessive timer setting resulting in the motion of the abdominal structures
- d. double exposure
- e. grid error

____ 3.

Figure 2



Pertaining to the figure 2, answer the following question.

What was the most likely cause that necessitated a repeat of this chest radiograph?

- a. IR placed upside down
- b. excessive scatter radiation
- c. An excessive timer setting resulting in the motion of the structures
- d. An improper mAs

____ 4.

Figure 7



Pertaining to the figure 7, answer the following question.

What was the most likely cause that necessitated a repeat of this C-spine radiograph?

- a. low kVp
- b. excessive scatter radiation
- c. An excessive timer setting
- d. double exposure
- e. grid error

____ 5.

Figure 8



Pertaining to the figure 8, answer the following question.

What was the most likely cause that necessitated a repeat of this radiograph?

- a. low kVp
- b. excessive scatter radiation
- c. An excessive timer setting
- d. double exposure
- e. grid error

____ 6.

Figure 9



Source: Saia DA: *Lange Q&A™ Radiography Examination, 8th Edition*: www.radrevieweasy.com

Copyright © The McGraw-Hill Companies, Inc. All rights reserved.

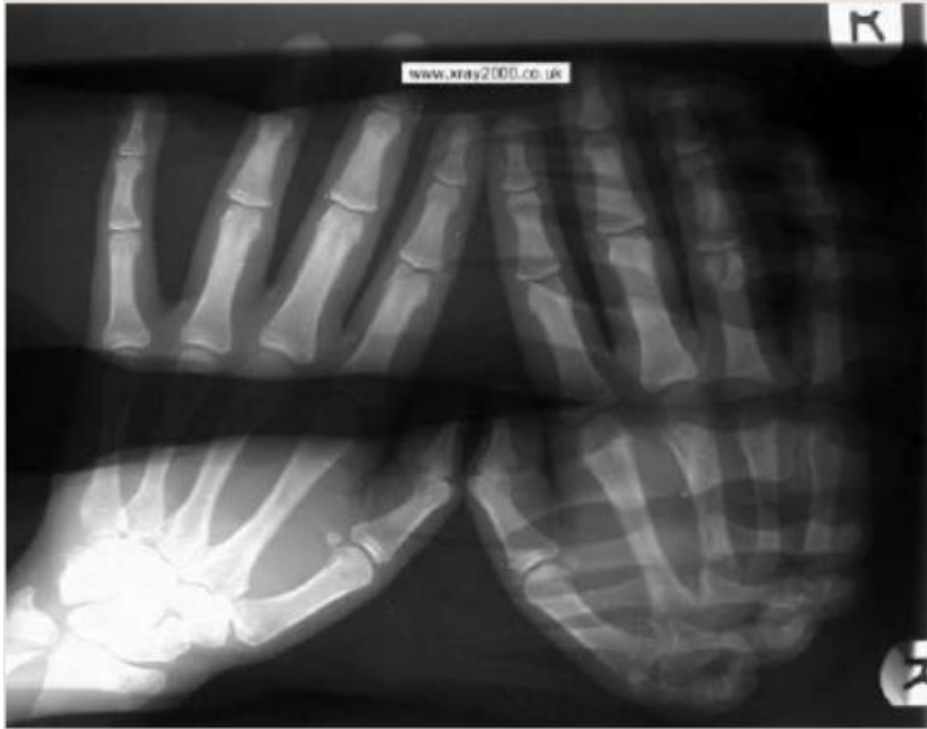
Pertaining to the figure 9, answer the following question.

What was the most likely cause that necessitated a repeat of this radiograph?

- a. low kVp
- b. excessive scatter radiation
- c. An excessive timer setting
- d. double exposure
- e. grid error

___ 7.

Figure 21



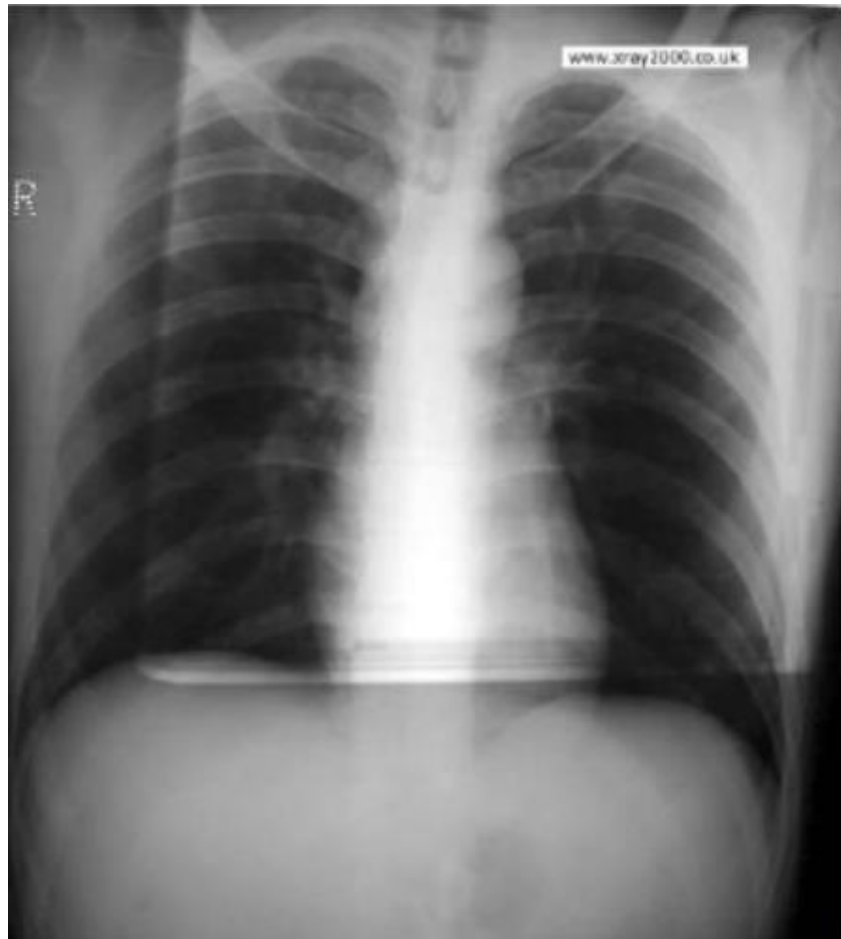
Pertaining to the figure 21, answer the following question.

What was the most likely cause that necessitated a repeat of this radiograph?

- a. low kVp
- b. excessive scatter radiation
- c. An excessive timer setting
- d. double exposure
- e. grid error

_____ 8.

Figure 22



Pertaining to the figure 22, answer the following question.

What was the most likely cause that necessitated a repeat of this chest radiograph?

- a. low kVp
- b. excessive scatter radiation
- c. An excessive timer setting
- d. double exposure
- e. grid error

Short Answer

9.

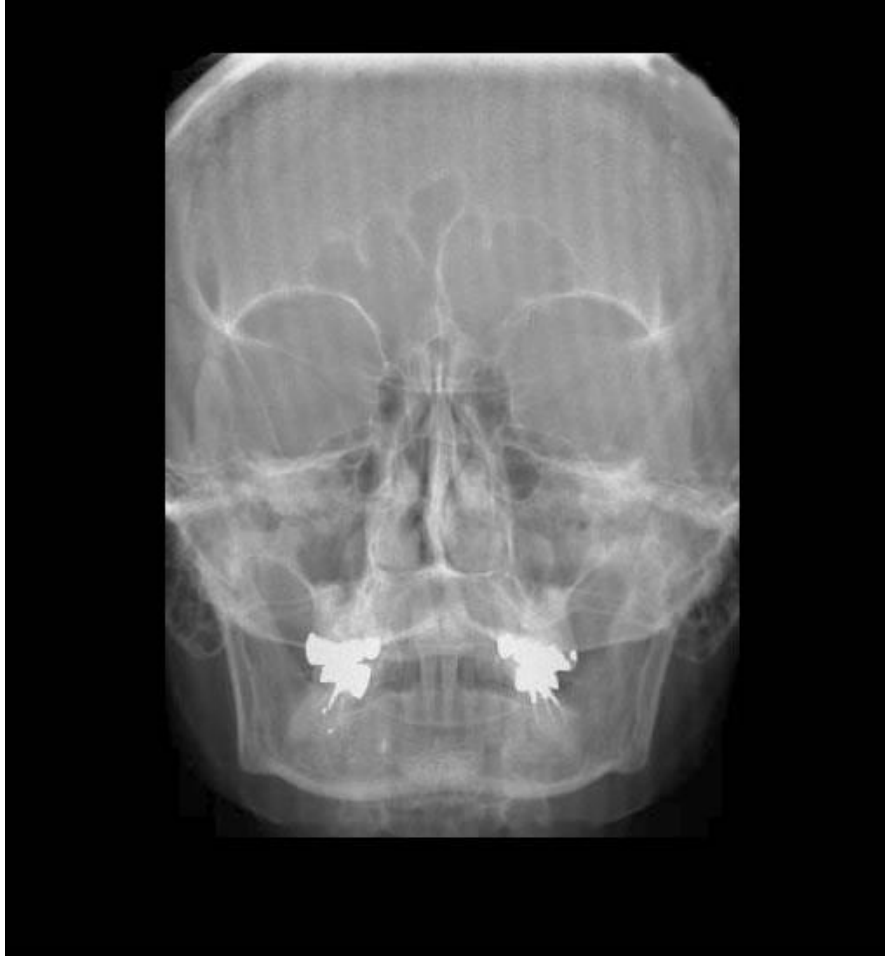
Figure 11
Artifact



The artifacts (staircase) illustrated in Figure 11 was caused by:

10.

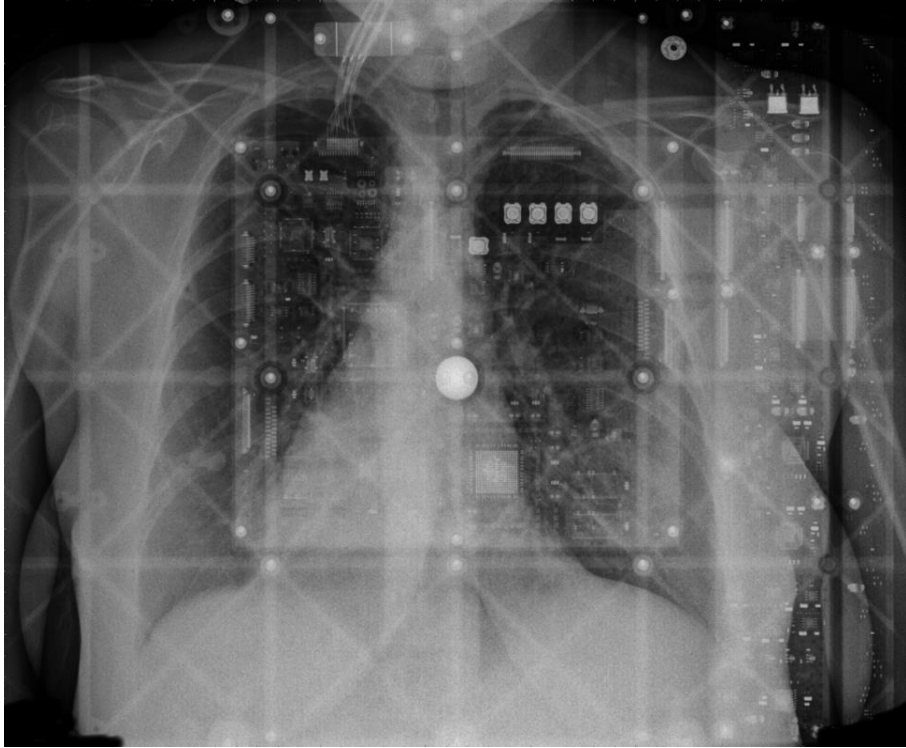
Figure 12
Artifact



The artifact illustrated in Figure 12 was caused by:

11.

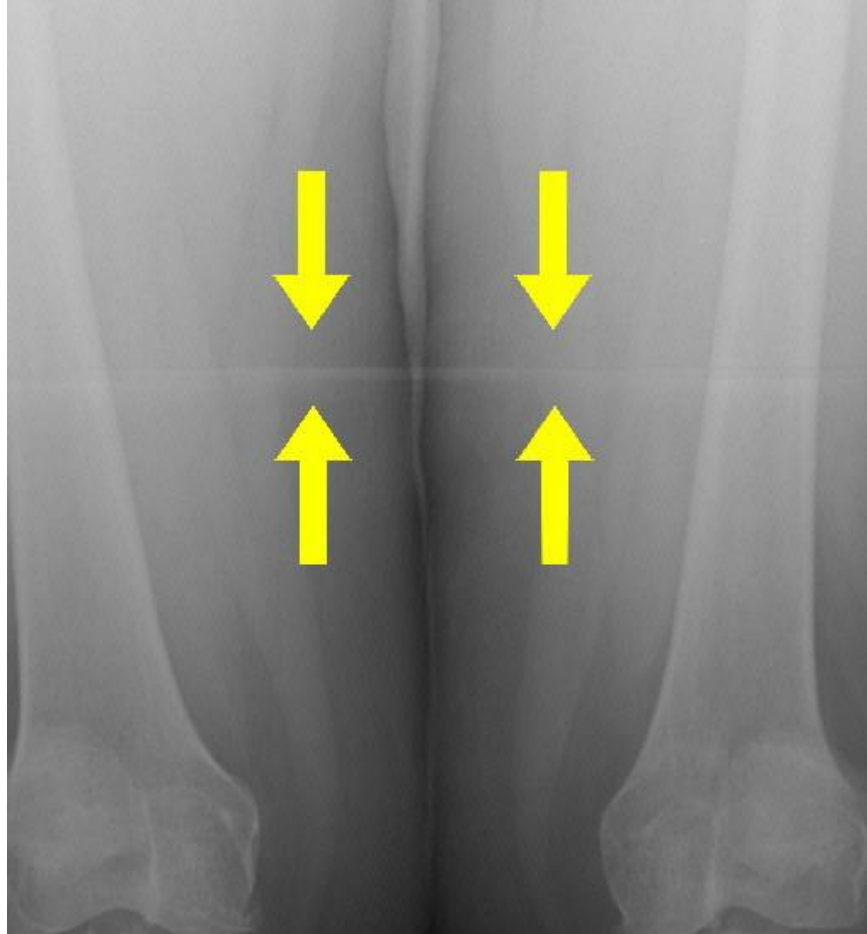
Figure 13
Artifact



The artifact illustrated in Figure 13 was caused by:

12.

Figure 14
Artifact



The artifact illustrated in Figure 14 was caused by:

13.

Figure 15
Artifact



The artifact illustrated in Figure 15 was caused by:

14.

Figure 16
Artifact



The artifact illustrated in Figure 16 was caused by:

15.

Figure 17
Artifact



The artifact illustrated in Figure 17 was caused by:

Artifacts Practice 2017 Answer Section

MULTIPLE CHOICE

1. ANS: B PTS: 1
2. ANS: D PTS: 1
3. ANS: C PTS: 1
4. ANS: B PTS: 1
5. ANS: E PTS: 1
6. ANS: E PTS: 1
7. ANS: D PTS: 1
8. ANS: B PTS: 1

SHORT ANSWER

9. ANS:
Bad stitching

PTS: 1
10. ANS:
Moire artifact (low frequency grid)

PTS: 1
11. ANS:
IR upside-down

PTS: 1
12. ANS:
Bad stitching

PTS: 1
13. ANS:
Contrast medium spill

PTS: 1
14. ANS:
Baby?

PTS: 1
15. ANS:
Sand Bag

PTS: 1